

**Sicherheits-Absperrblöcke**

**Blasenspeicher - Zubehör**

**Kenngößen**

|                         |                        |
|-------------------------|------------------------|
| Type                    | <b>B10 - B20</b>       |
| Max. Betriebsdruck      | 330 bar                |
| Nenngröße               | 10 + 20 mm             |
| Temperaturbereich       | -15/ +60° C            |
| Nenndurchfluß bei 6 m/s | 30 + 115 l/min         |
| Druckbegrenzungsventil  | 10 mm Ø<br>5 - 330 bar |

**Safety-shut off blocks**

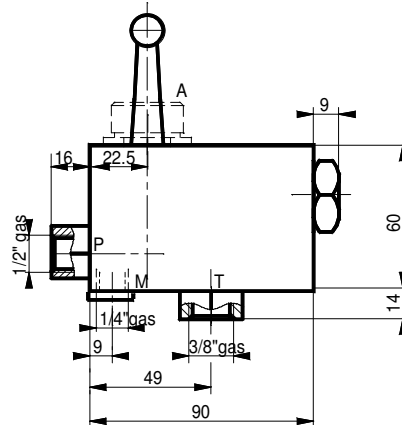
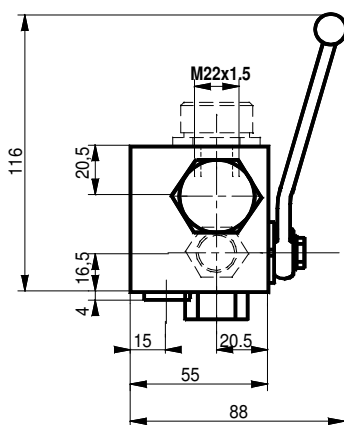
**Bladder accumulators - accessories**

**Data**

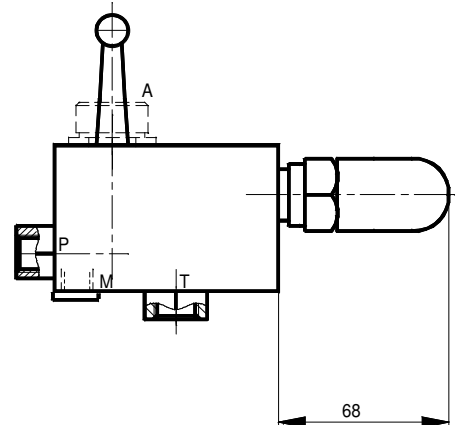
|                       |                        |
|-----------------------|------------------------|
| type                  | <b>B10 + B20</b>       |
| max. working pressure | 330 bar                |
| nominal size          | 10 + 20 mm             |
| temperature range     | -15/ +60° C            |
| nominal flow at 6 m/s | 30 + 115 l/min         |
| pressure relief valve | 10 mm Ø<br>5 - 330 bar |

Druckbegrenzungsventil nicht geprüft  
 TÜV Prüfung, auf  
 210 / 330 bar eingestellt  
 Elektrische Entlastung 24 V= /110-220 V AC

Pressure relief valve without testing  
 TÜV testing, calibrated at 210 / 330 bar  
 Electric discharge 24 V= /110-220 V AC

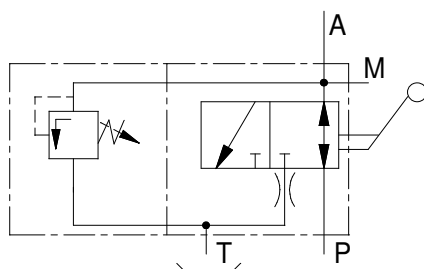


**ohne Druckbegrenzungsventil  
 without relief valve**



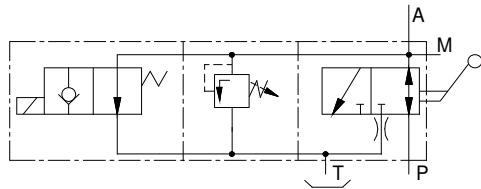
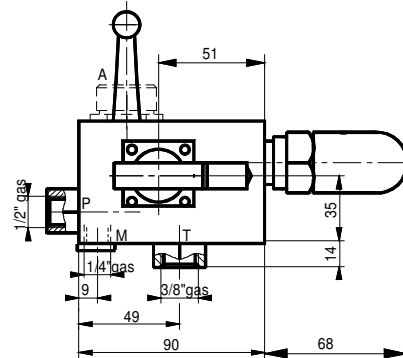
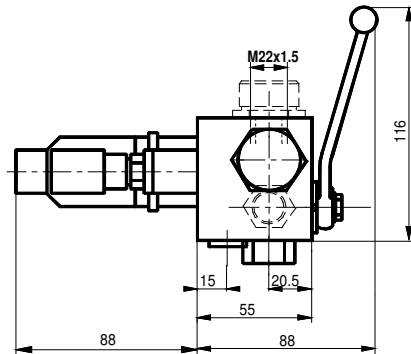
**mit Druckbegrenzungsventil  
 with relief valve**

**Block B10 mit manueller Entlastung  
 Block B10 with manual discharge**

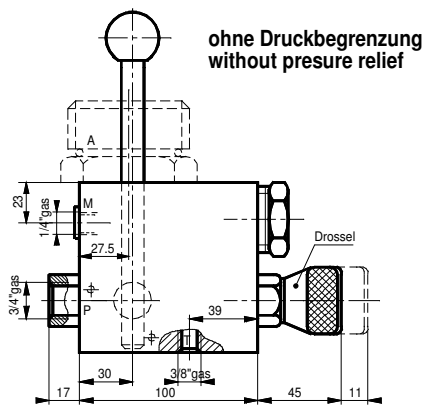


**Sicherheits-Absperrblöcke**  
 Blasenspeicher - Zubehör

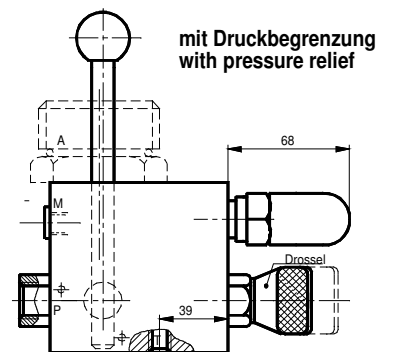
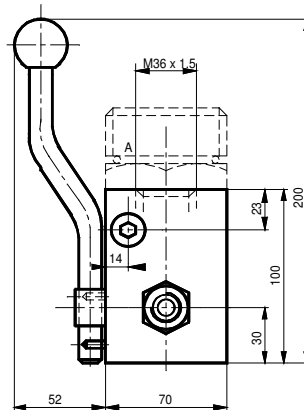
**Safety-shut off blocks**  
 Bladder accumulators - accessories



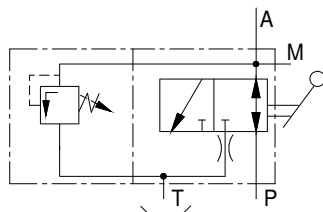
**Block B10 mit manueller und elektrischer Ent  
 mit Druckbegrenzungsventil**  
**Block B10 with manual & electric discharge  
 with relief valve**



**ohne Druckbegrenzung  
 without pressure relief**



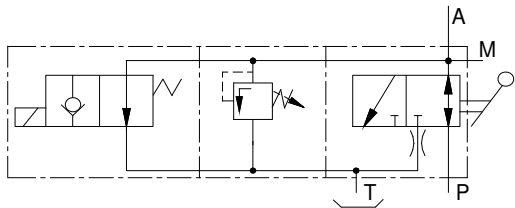
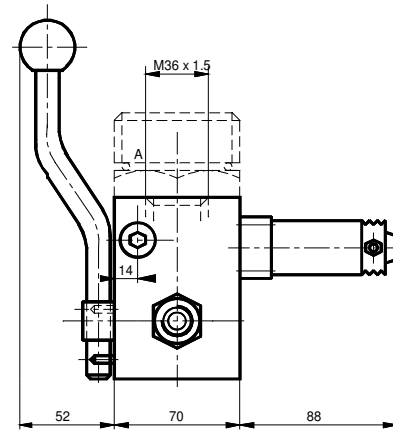
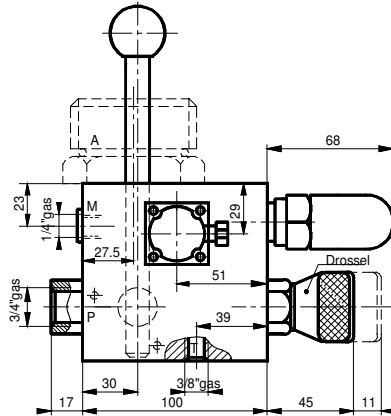
**mit Druckbegrenzung  
 with pressure relief**



**Block B20 mit manueller Entlastung**  
**Block B20 with manual discharge**

**Sicherheits-Absperrblöcke**  
**Blasenspeicher - Zubehör**

**Safety-shut off blocks**  
**Bladder accumulators - accessories**



**Block B20 mit manueller und elektrischer Er  
 mit Druckbegrenzungsventil**  
**Block B20 with manual & electric discharge  
 with relief valve**

**Bestellbezeichnung Blasenspeicher**

**Order code bladder accumulator**

**AS 10 P 330 C G 2 - Po**

**AS 10 P 330 C G 2 - Po**

(1) (2) (3) (4) (5) (6) (7)

(1) (2) (3) (4) (5) (6) (7)

- (1) Speichernennvolumen
- (2) Blasenwerkstoff  
 P = Perbunan (Standard)  
 F = Nitril für Niedertemperatur  
 H = Nitril für Kohlewasserstoffe  
 B = Butyl  
 E = Äthylen-Propylen
- (3) max. Betriebsdruck (bar)
- (4) Behälter u. Ventilwerkstoff  
 C = Kohlenstoffstahl  
 N = wie C, vernickelt  
 X = rostfreier Stahl
- (5) G = Standardgewinde  
 R = mit Reduzierung
- (6) 0 = Werksprüfung  
 2 = TÜV (BRD)  
 5 = BS-Lloyds Register, etc.
- (7) Stickstoff-Vorfülldruck

- (1) nominal capacity
- (2) bladder material  
 P = Perbunan (standard)  
 F = low temperature Nitrile  
 H = Nitrile for hydrocarbons  
 B = Butyl  
 E = Ethylene-Propylene
- (3) max. working pressure (bar)
- (4) shell & valve material  
 C = carbon steel  
 N = as C, Nickel coated  
 X = stainless steel
- (5) G = standard thread  
 R = with threaded adapter
- (6) 0 = factory tested  
 2 = TÜV (BRD)  
 5 = BS-Lloyds Register, etc.
- (7) Nitrogen precharge pressure

## Sicherheits-Absperrblöcke Blasenspeicher - Zubehör

## Safety-shut off blocks Bladder accumulators - accessories

### Bestellbezeichnung Sicherheits- u. Absperrblöcke

### Order code safety-shut off blocks

**B10 M B 330 G R P**  
 (1) (2) (3) (4) (5) (6) (7)

**B10 M B 330 G R P**  
 (1) (2) (3) (4) (5) (6) (7)

- (1) Größe
- (2) M = manuell  
E = elektrisch und manuell
- (3) A = ohne Druckbegrenzung  
B = mit Druckbegrenzung (ohne Abnahme)  
D = mit Druckbegrenzung (TÜV Abnahme)
- (4) max. Betriebsdruck (bar)
- (5) Speicheranschluß (siehe Fußnote)
- (6) Druckanschluß Anlage  
G1/2" ⇒ B10 / G3/4" ⇒ B20
- (7) P = Dichtungen Perbunan  
V = Dichtungen Viton

- (1) size
- (2) M = manual  
E = electric & manual
- (3) A = without pressure valve  
B = with press. valve (without testing)  
D = with press. valve (TÜV tested)
- (4) max. working pressure (bar)
- (5) accumulator side port (see note)
- (6) pressure connection system  
1/2"BSP ⇒ B10 / 3/4"BSP ⇒ B20
- (7) seals Perbunan  
seals Viton

#### Fußnote (5) Speicheranschluß

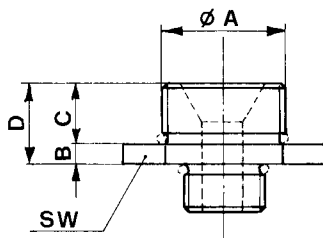
B10 G = Nippel G2"  
 G1 = Nippel G1 1/4"  
 G3 = Nippel G3/4"  
 M1 = Nippel M40x1,5  
 M2 = Nippel M50x1,5  
 B20 G = Nippel G2"  
 G1 = Nippel G1 1/4"  
 M = Nippel M50x1,5

#### Note (5) accumulator side connection

B10 G = nipple 2"BSP  
 G1 = nipple 1 1/4"BSP  
 G3 = nipple 3/4"BSP  
 M1 = nipple M40x1,5  
 M2 = nipple M50x1,5  
 B20 G = nipple 2"BSP  
 G1 = nipple 1 1/4"BSP  
 M = nipple M50x1,5

## Nippel mit O-Ring Verbindung Speicher - Sicherheitsblock

## Nipple with O-Ring Connection accumulator - safety block



| Best Nr. | Typ | Ø A     | B  | C  | D  | SW |
|----------|-----|---------|----|----|----|----|
| 10450    | B10 | G3/4    | 6  | 14 | 20 | 36 |
| 10451    |     | G1 1/4  | 6  | 14 | 20 | 50 |
| 10452    |     | G2"     | 8  | 16 | 24 | 70 |
| 10453    |     | M40x1,5 | 6  | 14 | 20 | 50 |
| 10454    |     | M50x1,5 | 8  | 16 | 24 | 70 |
| 10470    | B20 | G1 1/4  | 10 | 16 | 26 | 50 |
| 10471    |     | G2"     | 10 | 20 | 30 | 70 |
| 10472    |     | M50x1,5 | 10 | 20 | 30 | 70 |